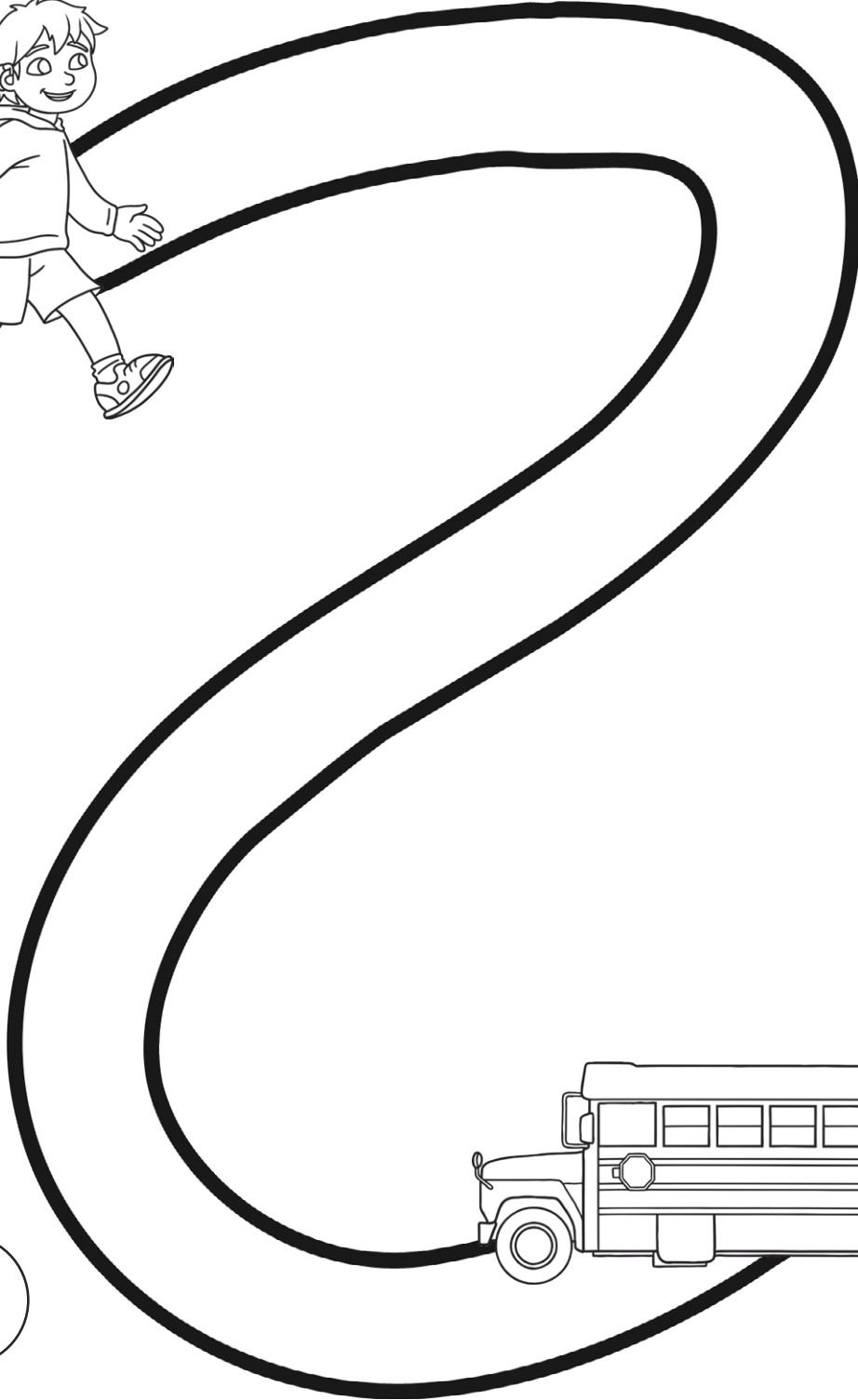
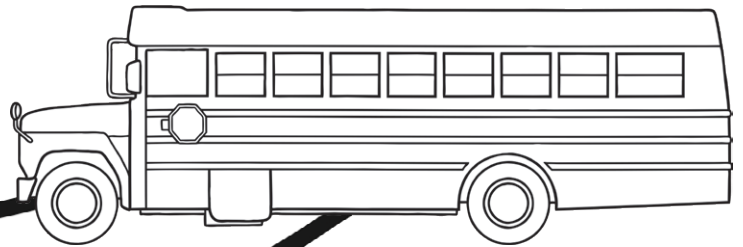


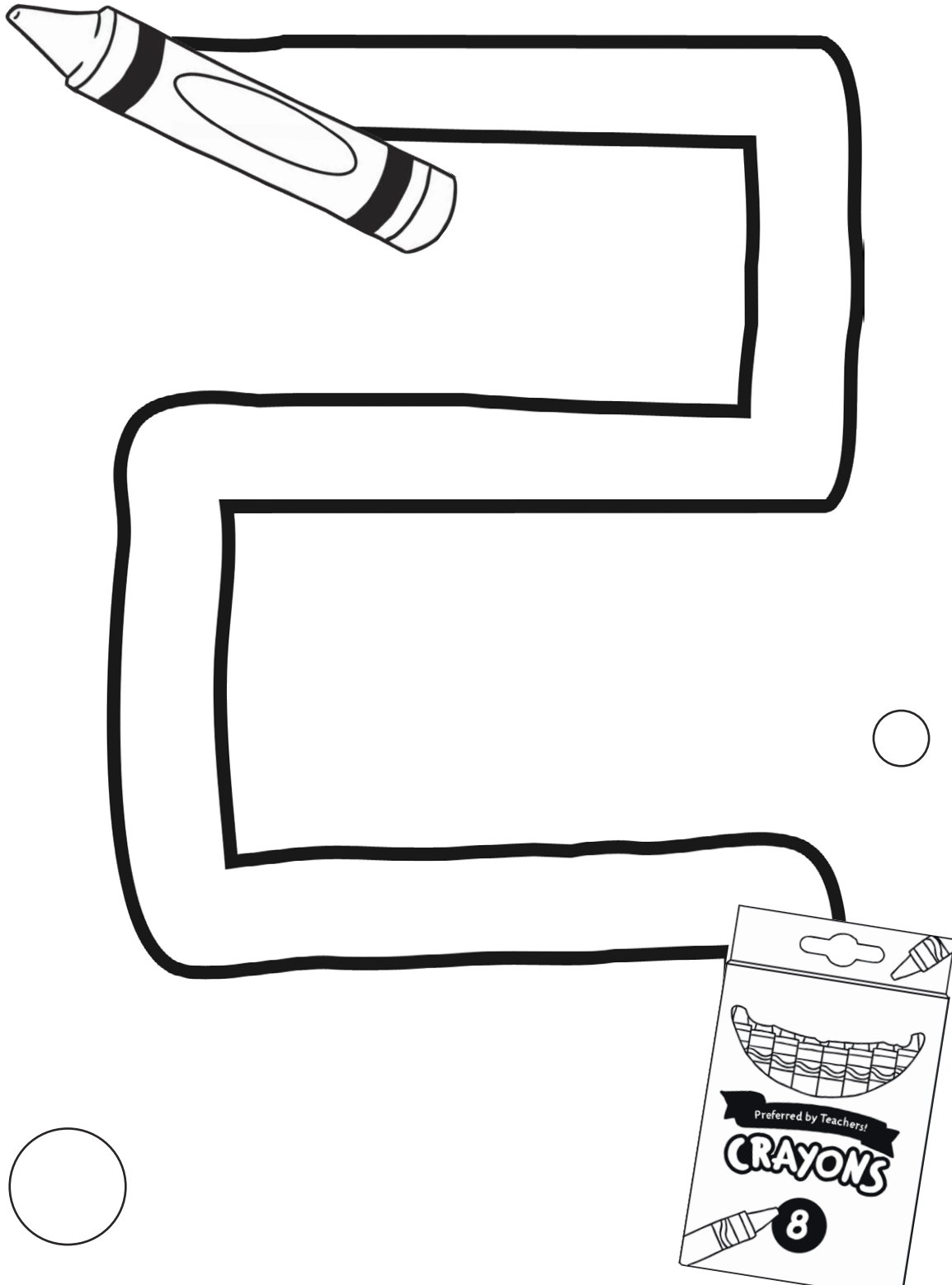
Back to School Pencil Control

Use your pencil to draw a line to connect the boy and the bus. Try to stay in the middle of the path.



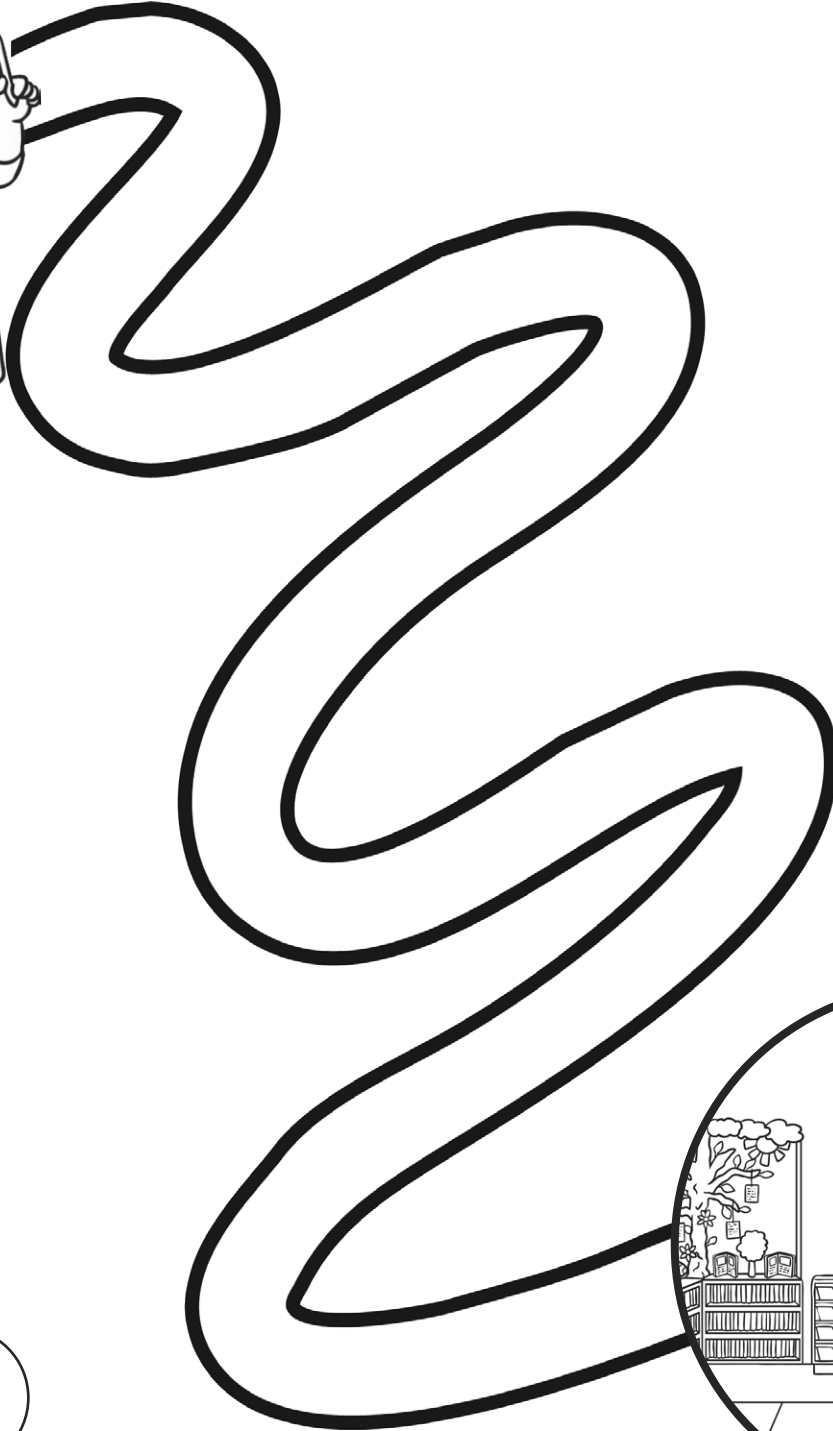
Back to School Pencil Control

Use your pencil to draw a line to connect the crayon and the crayon pack. Try to stay in the middle of the path.



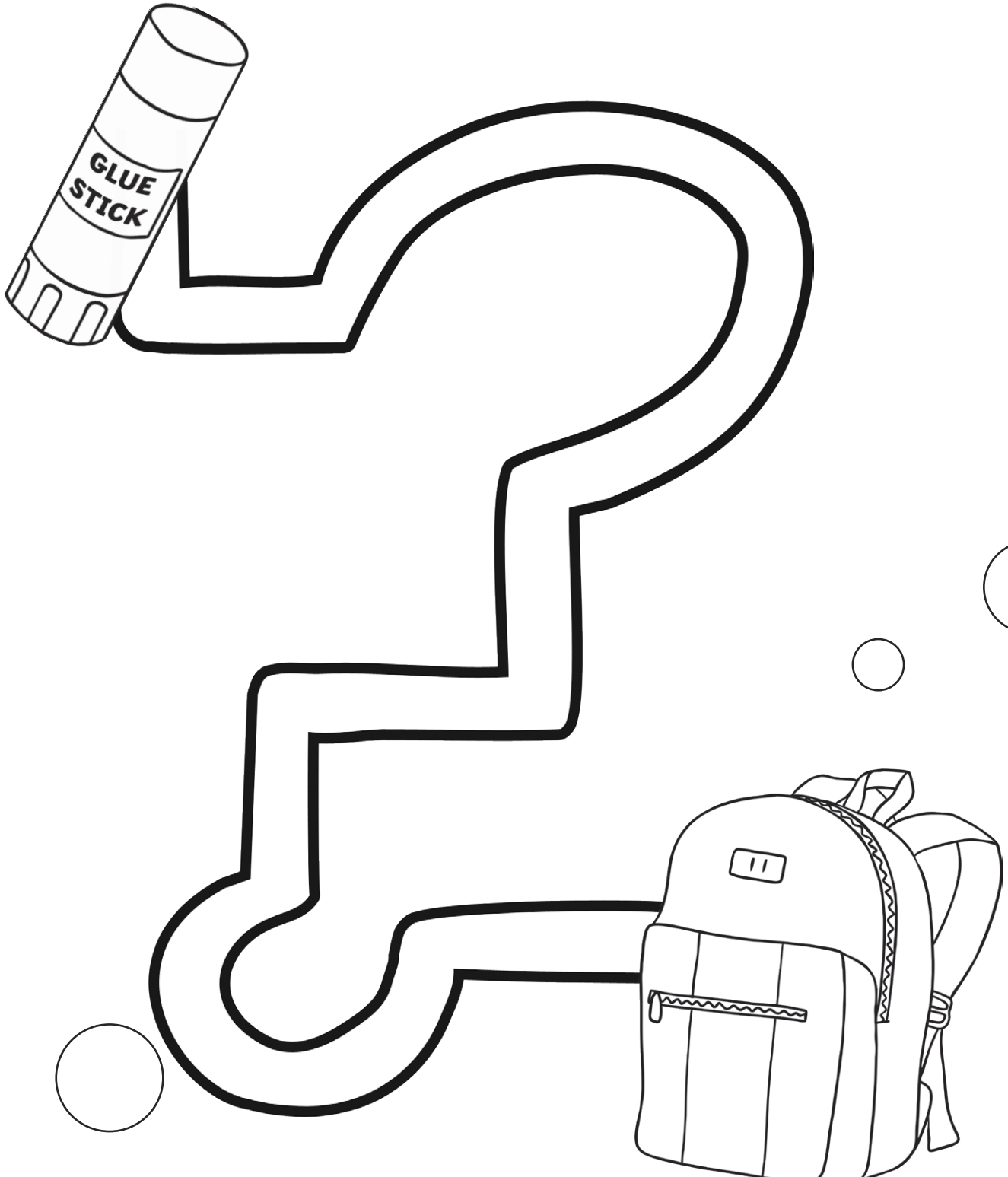
Back to School Pencil Control

Use your pencil to draw a line to connect the teacher and the classroom. Try to stay in the middle of the path.



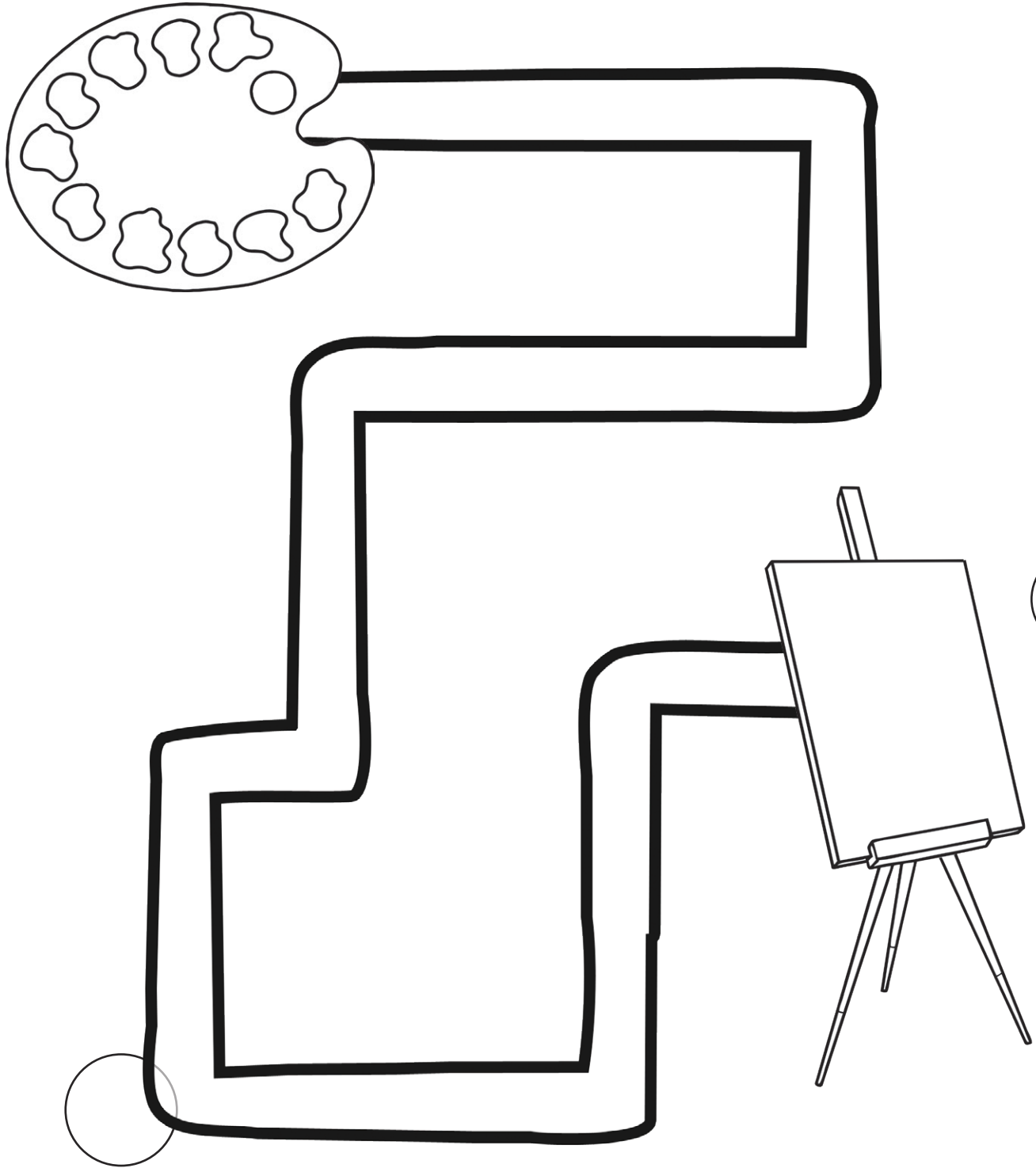
Back to School Pencil Control

Use your pencil to draw a line to connect the glue and the backpack. Try to stay in the middle of the path.



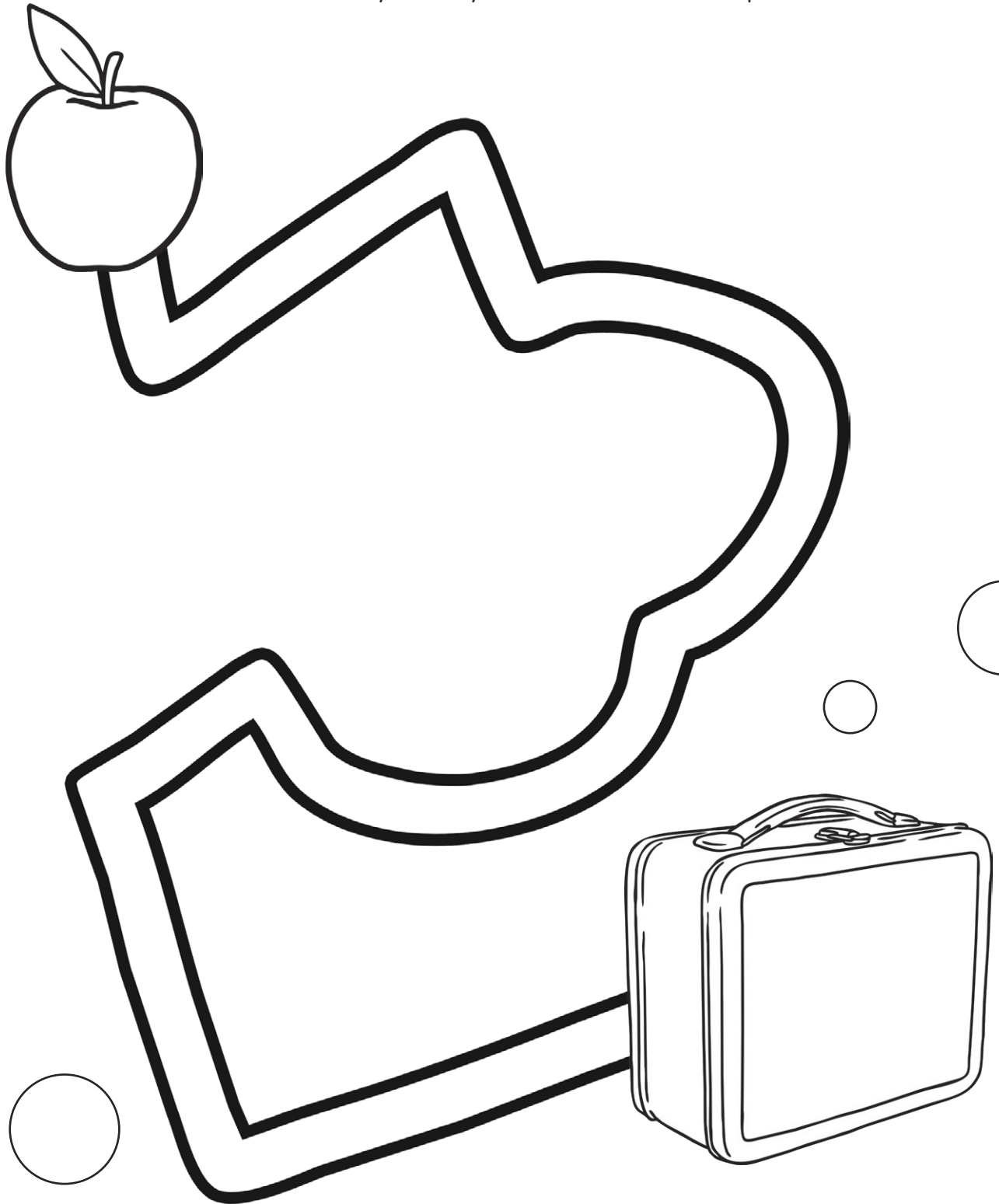
Back to School Pencil Control

Use your pencil to draw a line to connect the paint and the easel. Try to stay in the middle of the path.



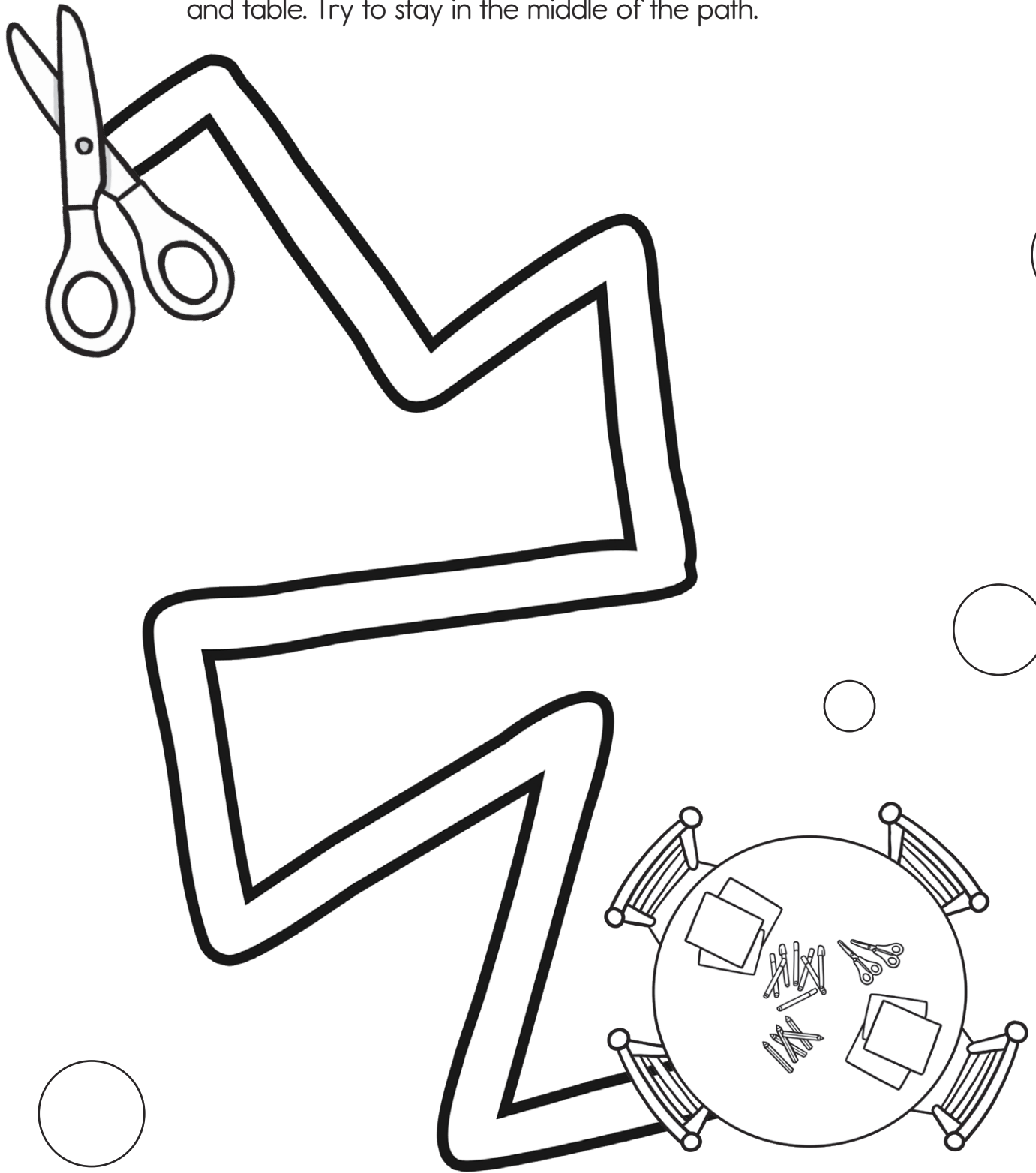
Back to School Pencil Control

Use your pencil to draw a line to connect the apple and the lunch box. Try to stay in the middle of the path.



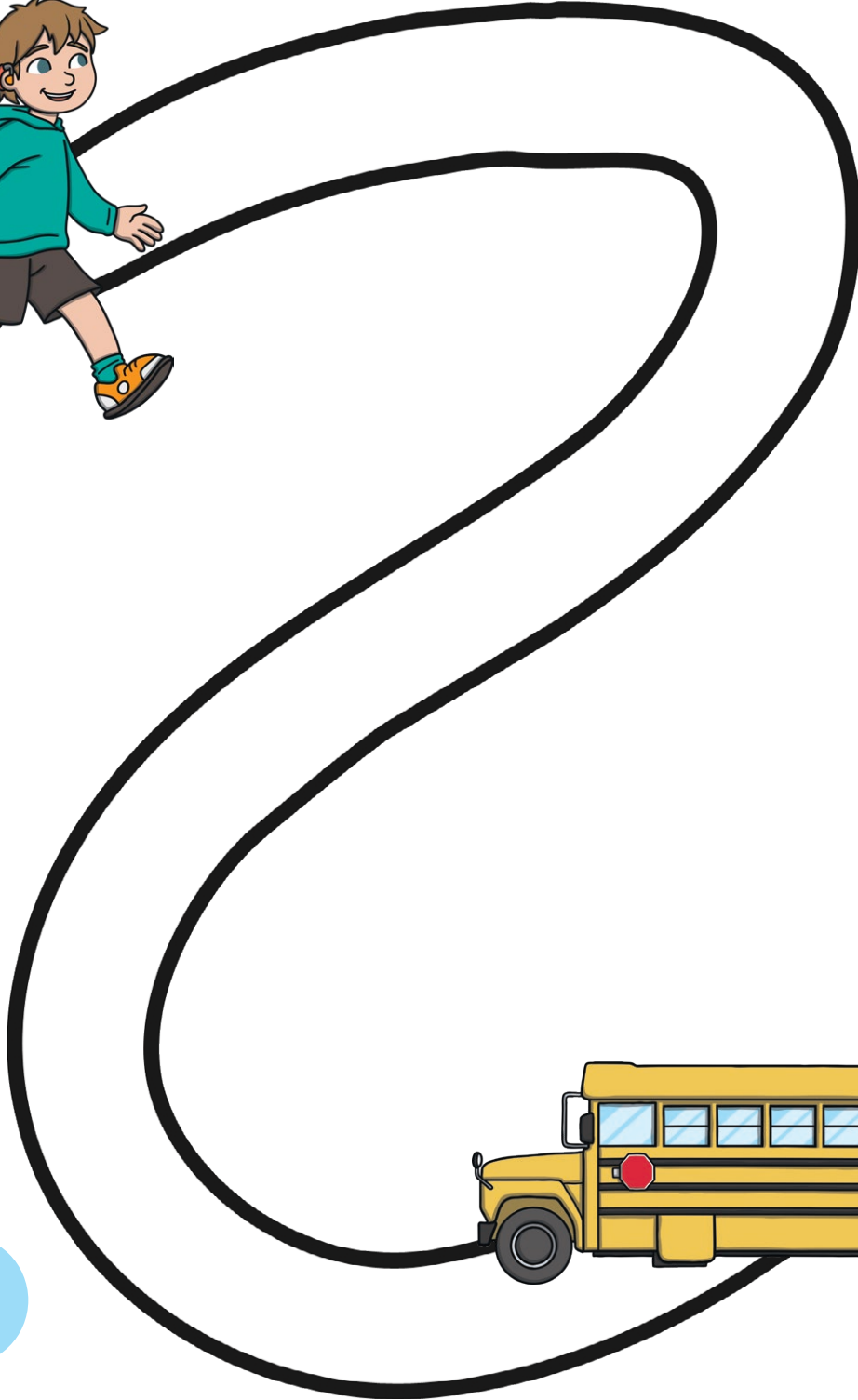
Back to School Pencil Control

Use your pencil to draw a line to connect the scissors and table. Try to stay in the middle of the path.



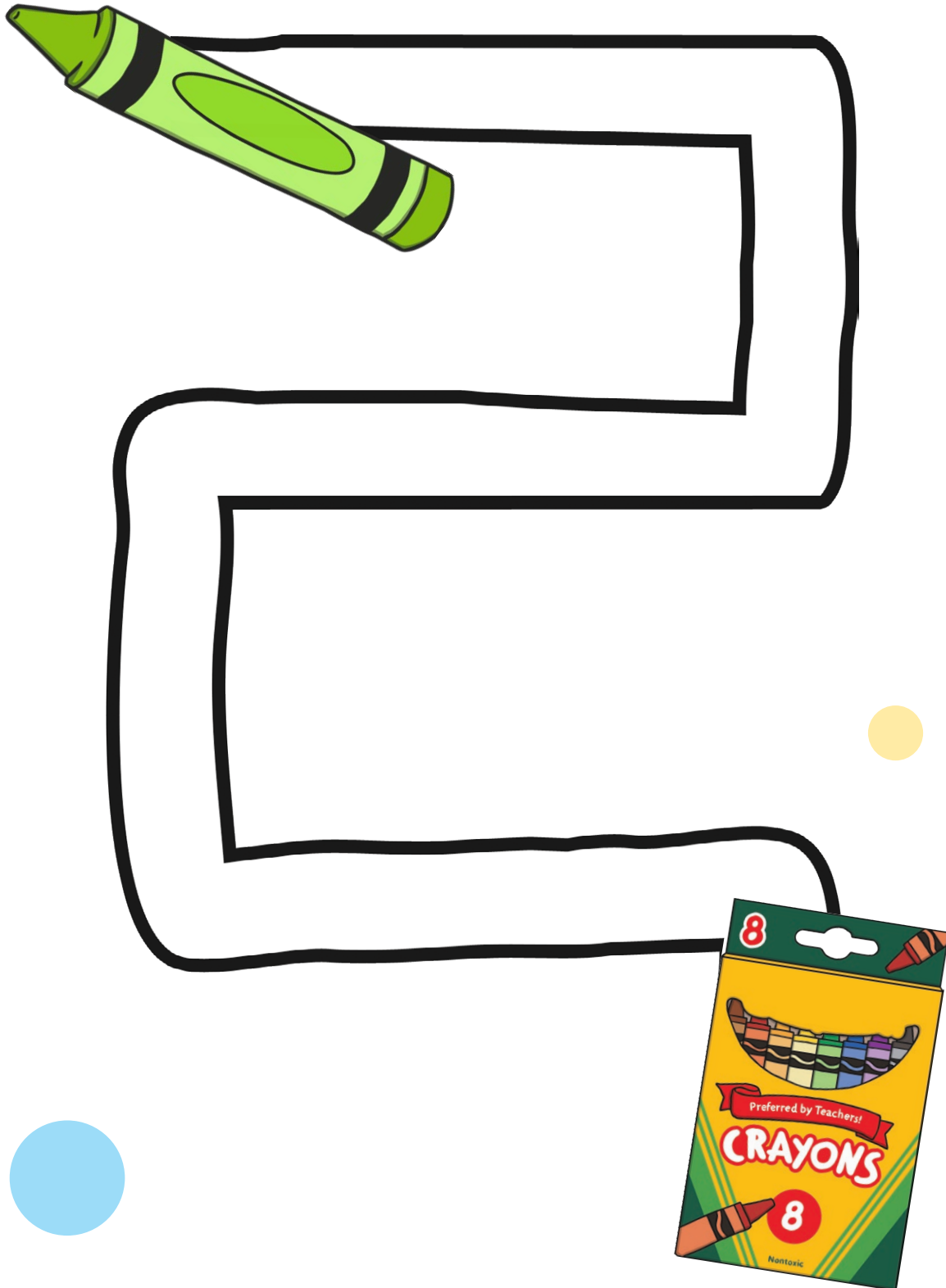
Back to School Pencil Control

Use your pencil to draw a line to connect the boy and the bus. Try to stay in the middle of the path.



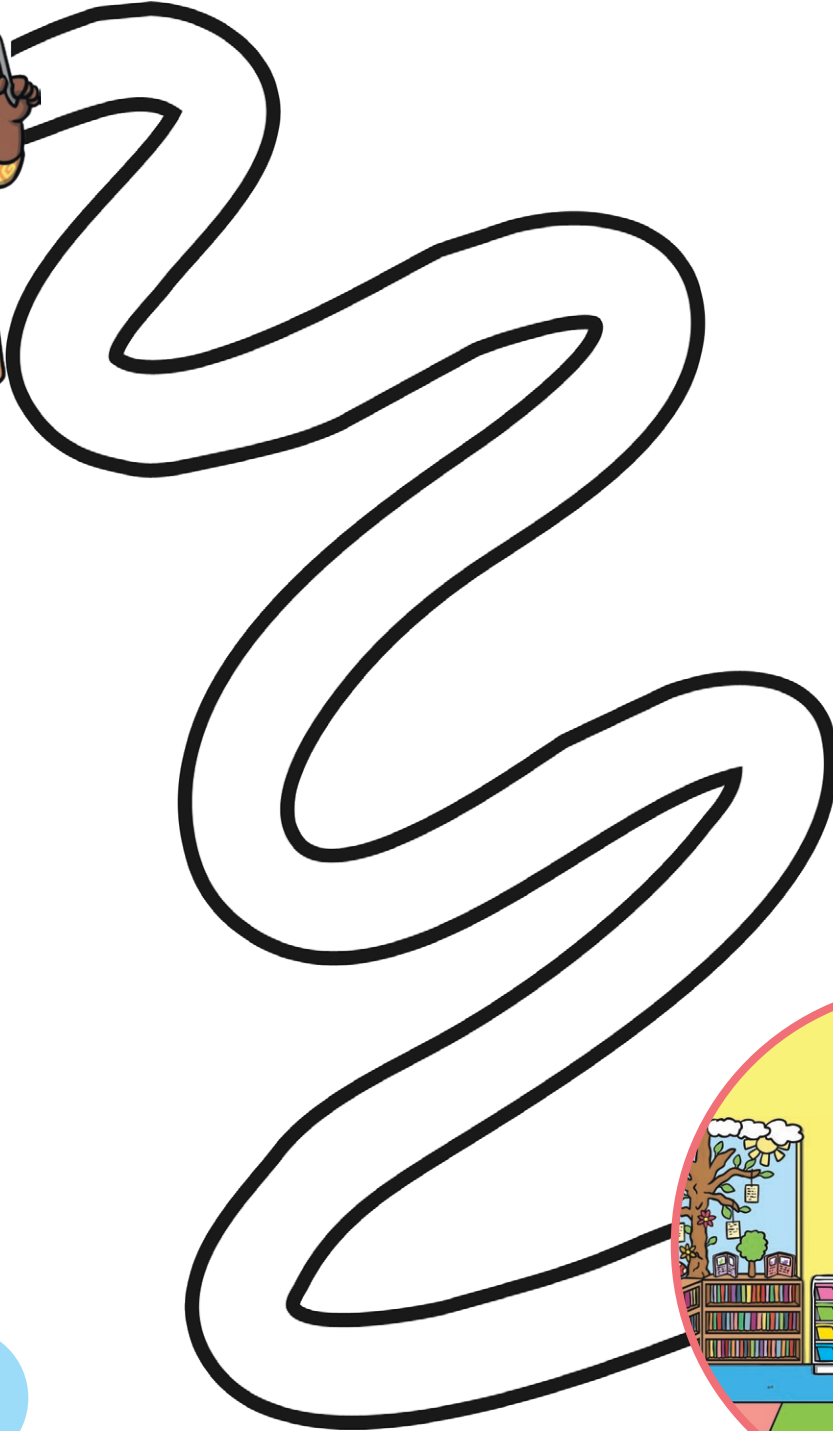
Back to School Pencil Control

Use your pencil to draw a line to connect the crayon and the crayon pack. Try to stay in the middle of the path.



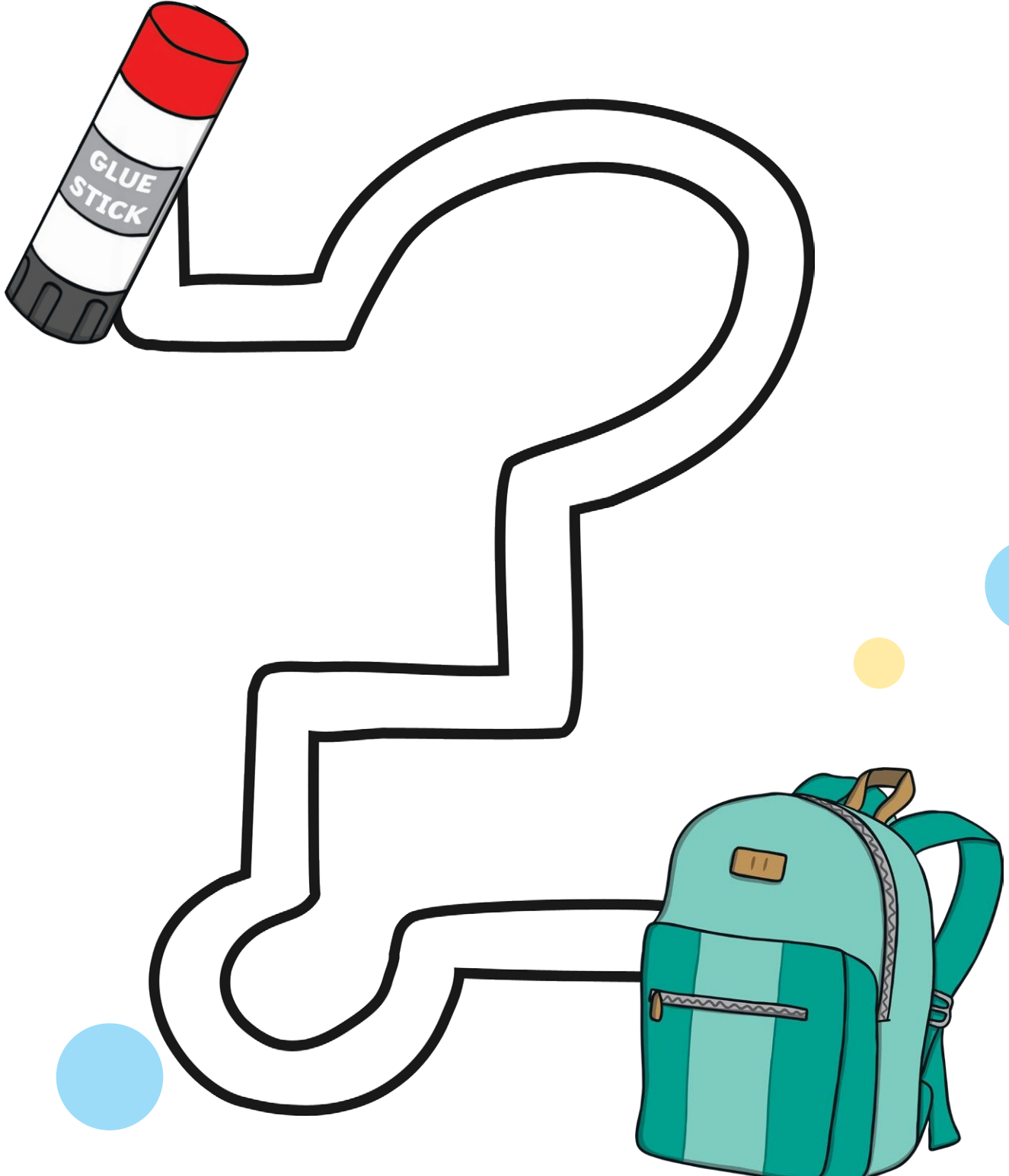
Back to School Pencil Control

Use your pencil to draw a line to connect the teacher and the classroom. Try to stay in the middle of the path.



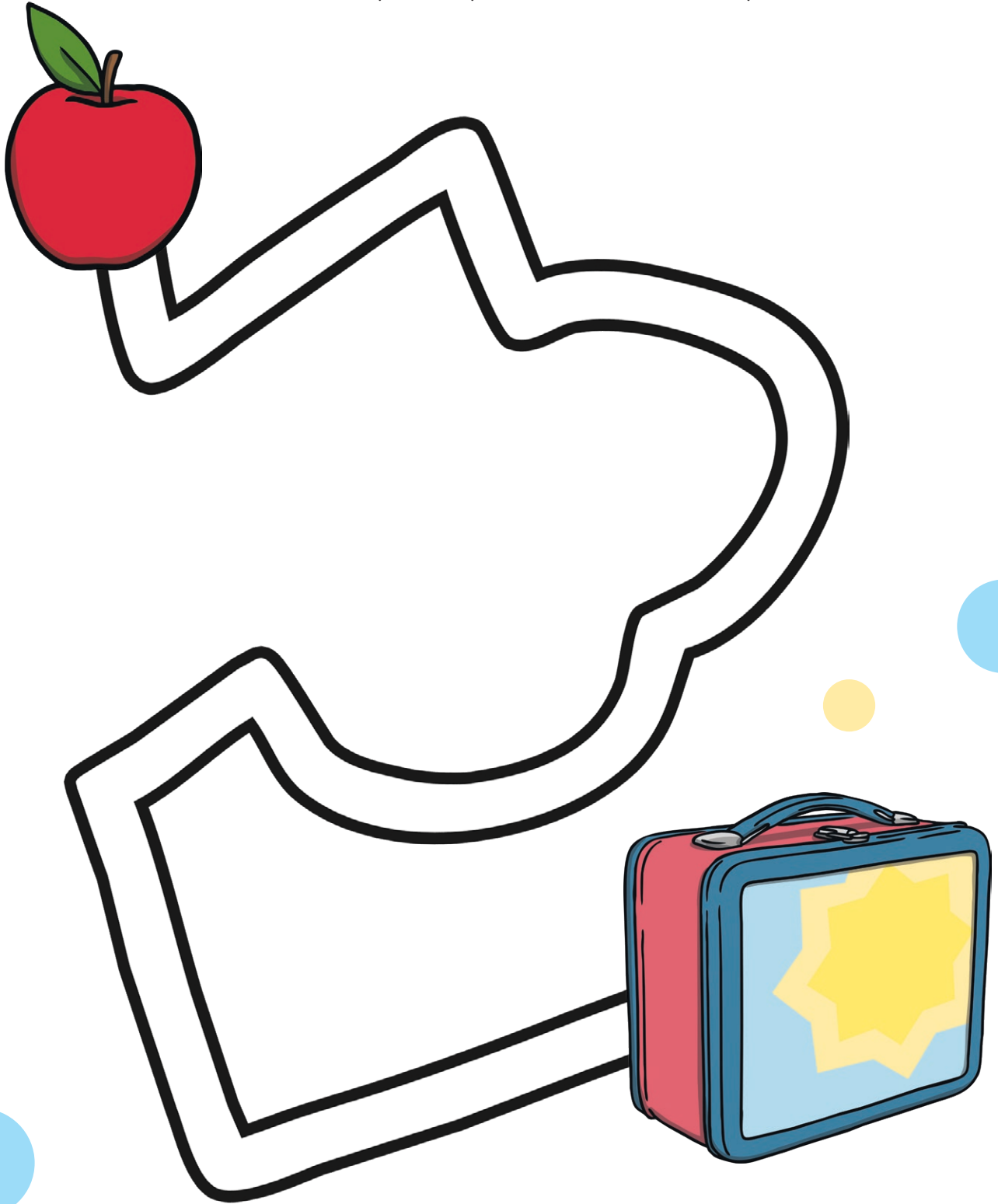
Back to School Pencil Control

Use your pencil to draw a line to connect the glue and the backpack. Try to stay in the middle of the path.



Back to School Pencil Control

Use your pencil to draw a line to connect the apple and the lunch box. Try to stay in the middle of the path.



Back to School Pencil Control

Use your pencil to draw a line to connect the scissors and table. Try to stay in the middle of the path.

